



EDGEWATER GROUP
REAL ESTATE & DEVELOPMENT

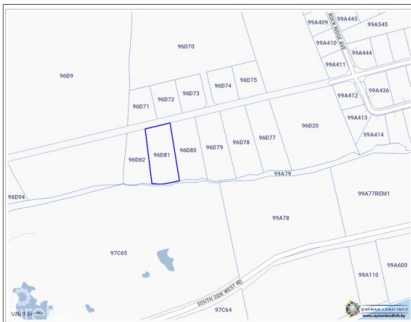
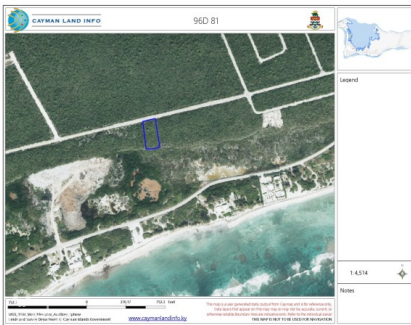
43 Vibert Bodden Drive, P.O. Box 30132 SMB George Town, Grand Cayman KY1-1201
Cayman Islands, British West Indies.
+1 (345) 946-3343
info@edgewater.ky |

BRAC BLUFF EDGE LAND .70 ACRE

Cayman Brac West, Cayman Islands

MLS# 418718

CI\$150,000





Debi Bergstrom
 dbergstrom@edgewater.ky

Discover the opportunity to own a piece of paradise on the scenic Bluff Edge of Cayman Brac! This ocean view, high-and-dry parcel offers the perfect location to build your dream home or to land bank for future appreciation, as land values on Cayman Brac continue to soar. Situated just across the street from the inland Bluff lots currently on the market, this property boasts a strategic location that offers privacy and stunning natural surroundings. Adjoining lots are also available for sale, making it an excellent choice for those seeking additional space or investment potential. Convenience meets serenity here, with the property located just minutes from the Charles Kirkconnell International Airport, restaurants, shopping, grocery stores, and Cayman Brac’s top attractions. Enjoy outdoor adventures like rock climbing, exploring the famous Bluff Caves, and birdwatching, where you may spot the endangered Booby Bird and the vibrant Cayman Brac Parrot. For water enthusiasts, the island is renowned for world-class fishing and scuba diving, offering breathtaking underwater experiences. Don’t miss this chance to invest in the future while enjoying the natural beauty and tranquility of Cayman Brac. Contact us today to secure this incredible piece of property and start turning your dream into a reality!

Essential Information

| | | | |
|--------------------------------|--------------------------|----------------------|--------------------------------------------------|
| Type Land (For Sale) | Status Current | MLS 418718 | Listing Type Little Cayman/Cayman Brac |
|--------------------------------|--------------------------|----------------------|--------------------------------------------------|

Key Details

| | | | | |
|------------------------|------------------------|-----------------|------------------|---------------------------------|
| Width 127.00 | Depth 250.00 | Bed 0 | Bath 0 | Block & Parcel 96D,81 |
|------------------------|------------------------|-----------------|------------------|---------------------------------|

Acreage
0.70

| | |
|------------------|-----------------------|
| Den No | Sq.Ft. 0.00 |
|------------------|-----------------------|

Additional Features

| | | |
|----------------------------------------|-----------------------------|---------------------|
| Views Water View, Ocean View | Road Frontage 127 | Soil Rock |
|----------------------------------------|-----------------------------|---------------------|