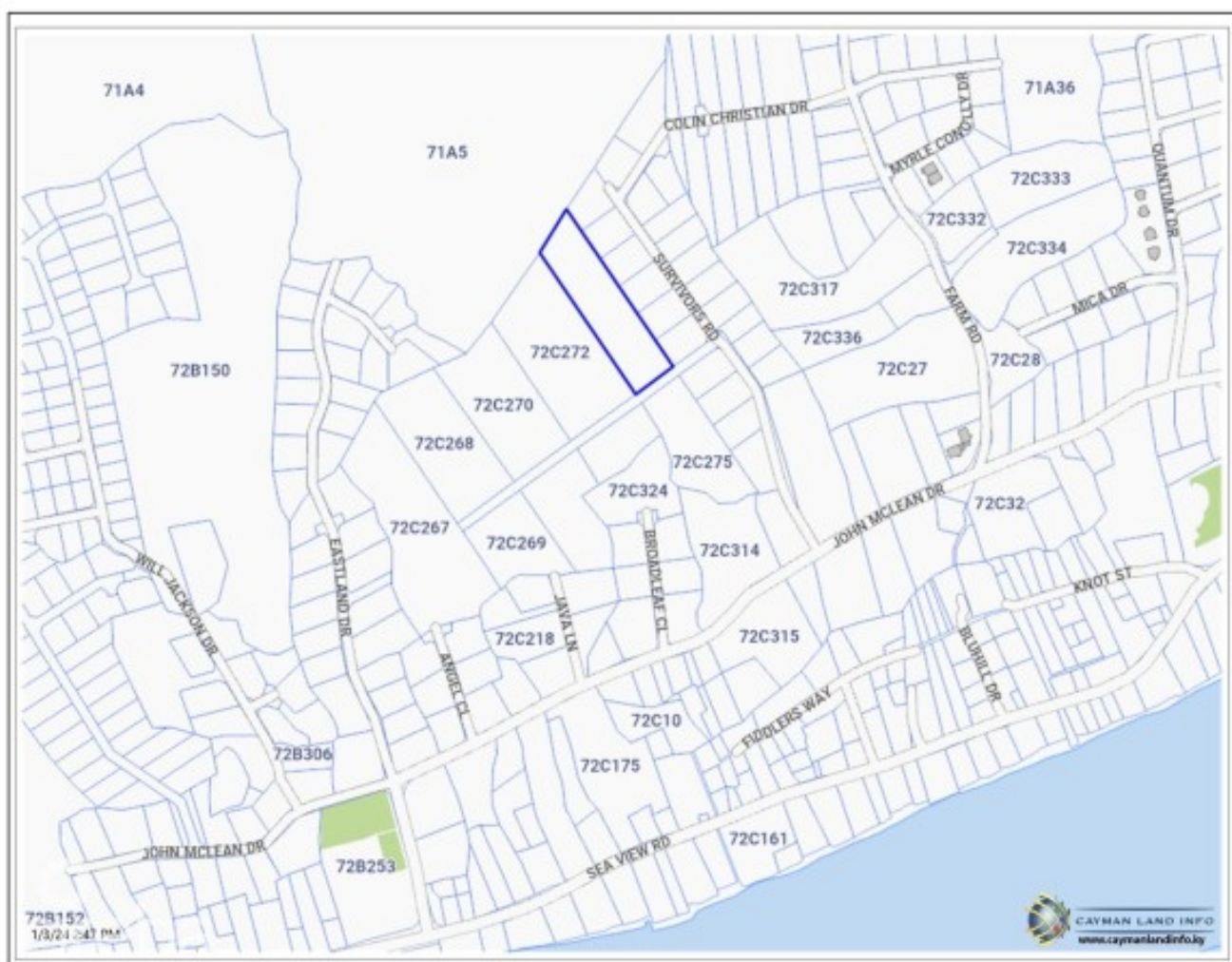


DEVELOPMENT LAND EAST END

East End, Cayman Islands

MLS# 417049

CI\$400,000



Debi Bergstrom

dbergstrom@edgewater.ky

Residential developable land north of John McLean Drive generally 5ft above sea level. Suitable for subdivision into seven house lots or 36 apartments

Essential Information

Type
Land (For Sale)

Status
Current

MLS
417049

Listing Type
**Med Density
Residential**

Key Details

Width
140.00

Depth
540.00

Bed
0

Bath
0

Block & Parcel
72C,274

Acreage
1.81

Den
No

Sq.Ft.
0.00

Additional Features

Views
Garden View

Zoning
**Medium Density
Residential**

Road Frontage
140

Soil
Rock