



**EDGEWATER GROUP**  
REAL ESTATE & DEVELOPMENT

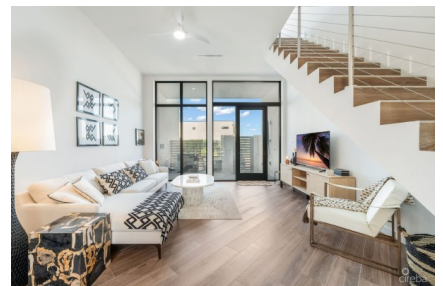
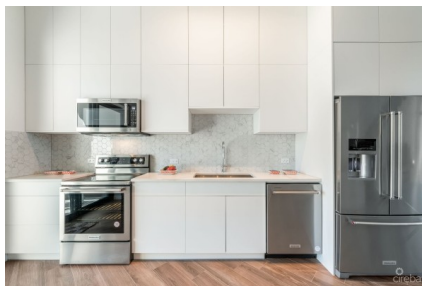
43 Vibert Bodden Drive, P.O. Box 30132 SMB George Town, Grand Cayman KY1-1201  
Cayman Islands, British West Indies.  
+1 (345) 946-3343  
info@edgewater.ky |

## FANTASTIC AND FULLY FURNISHED!

South Sound, Cayman Islands

MLS# 418499

**CI\$748,000**





**Debi Bergstrom**  
 dbergstrom@edgewater.ky

Serenely situated in the South Sound locale, this fantastic and fully furnished townhouse presents a spectacular blend of luxe level finishes and convenience, perfect for those seeking a tranquil yet connected living environment. Boasting voluminous ceiling heights for a bright and airy feel, this elegant property features two spacious bedroom suites both with their own private terrace and the bonus of a 7 x 5 study space offering a haven of comfort and style. Unmatched in its fine finishes, furniture package and improved floorplans, this move-in-ready townhouse is an energy-efficient new build, ensuring contemporary living with minimal outgoings—an exceptional investment potential for discerning buyers. The South Sound fronting development not only charms with its resort-level amenities with two pools, a cabana, fitness facility and lit tennis court above: perfect for indulging in a sophisticated lifestyle, but also provides easy access to the vibrant offerings of the surrounding area. This idyllic location, combined with the property's exquisite features and strategic investment potential, makes it a prime opportunity for those looking to embrace a luxurious island lifestyle in the Cayman Islands. Offered at an attractive asking price, seize the opportunity to own this remarkable home in paradise. Broker owned - call for floor plan!

## Essential Information

Type	Status	MLS	Listing Type
<b>Residential (For Sale)</b>	<b>Pen/Con</b>	<b>418499</b>	<b>Condominium</b>

## Key Details

Bed	Bath	Block & Parcel
<b>2</b>	<b>2</b>	<b>21C,163H72</b>
Den	Year Built	Sq.Ft.
<b>No</b>	<b>2024</b>	<b>1550.00</b>

## Additional Features

Lot Size	Views	Foundation	Floor Level
<b>0.00</b>	<b>Pool View, Lake View</b>	<b>Pier &amp; Beam</b>	<b>1</b>
Furnished			
<b>Yes</b>			