



EDGEWATER GROUP
REAL ESTATE & DEVELOPMENT

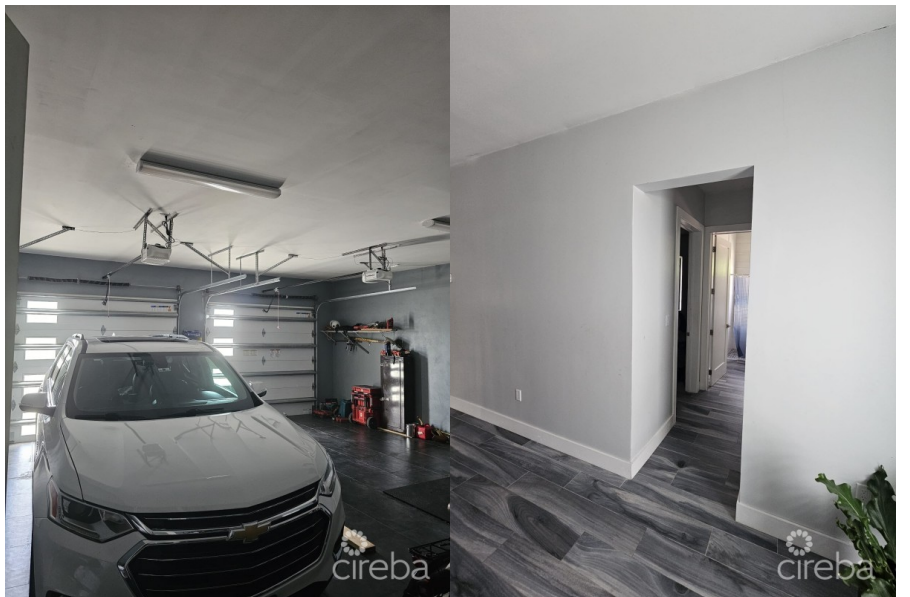
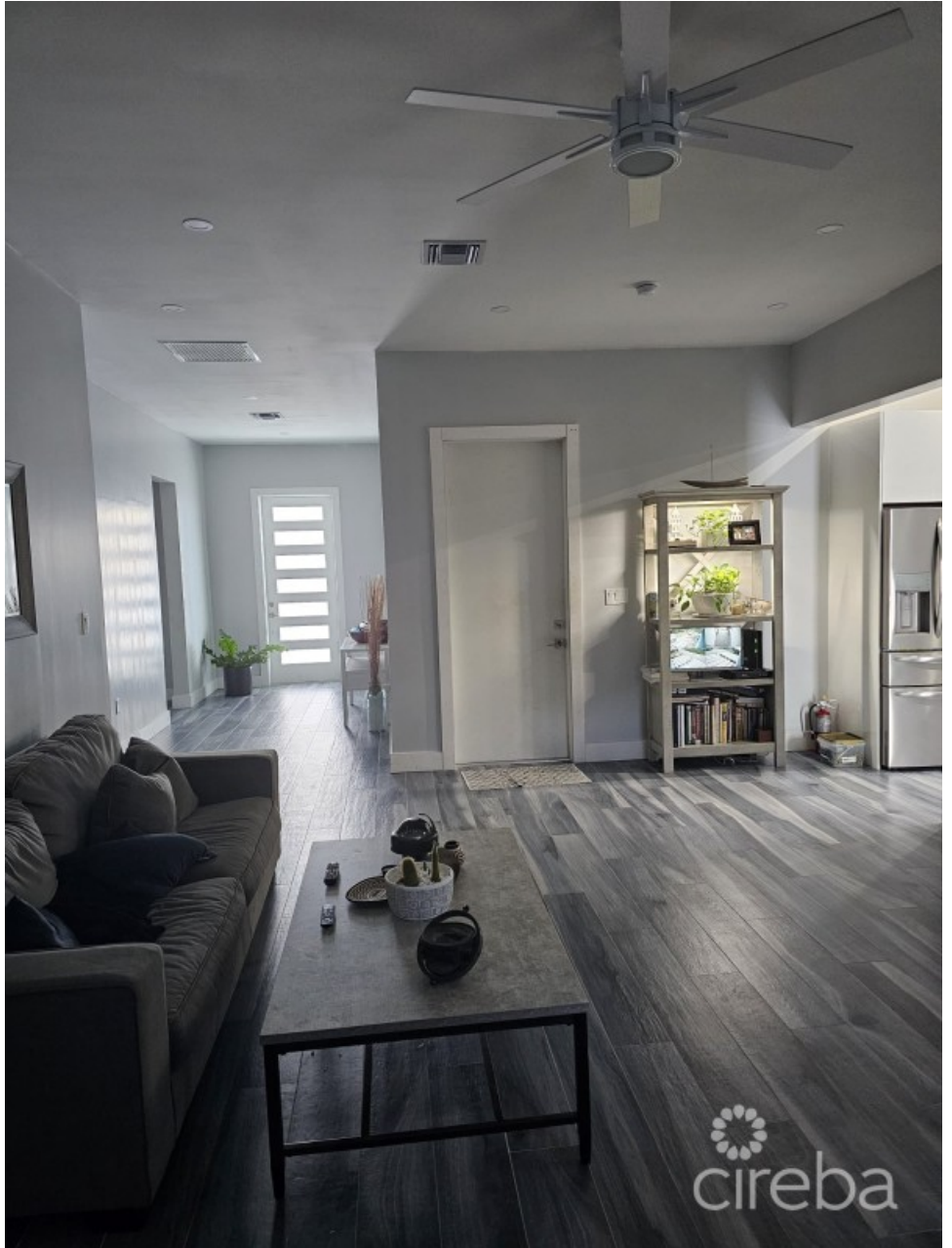
43 Vibert Bodden Drive, P.O. Box 30132 SMB George Town, Grand Cayman KY1-1201
Cayman Islands, British West Indies.
+1 (345) 946-3343
info@edgewater.ky |

BEACH BAY HOME

Lower Valley, Cayman Islands

MLS# 418458

CI\$840,000





Debi Bergstrom
 dbergstrom@edgewater.ky

Welcome to your coastal paradise! This exquisite 3-bedroom, 2-bathroom home in the sought-after Beach Bay area offers the perfect blend of luxury and comfort. With an open floor plan that maximizes space and natural light, this home is designed for modern living and entertaining. Key Features: • Spacious Open Floor Plan: The inviting living area seamlessly flows into the dining space and kitchen, creating an ideal environment for gatherings and family time. • Gourmet Kitchen: The well-appointed kitchen features high-end stainless steel appliances, granite countertops, and ample cabinetry, making it a chef's dream. • Master Suite Retreat: The generous master bedroom boasts an en-suite bathroom, dual vanities, providing a private oasis for relaxation. • Two Additional Bedrooms: Perfect for family, guests, or a home office, the two additional bedrooms are bright and spacious, sharing a stylishly designed second bathroom. • Prime Location: Just a short stroll to the beach, this home is ideally situated for those who love sun, sand, and sea. Enjoy nearby amenities, including shops, restaurants, and recreational activities. Additional Features: • Central air conditioning • Ample storage space • Parking for multiple vehicles Don't Miss Out! This beach bay home is a rare find and won't last long on the market. Schedule your private showing today and experience the beauty and tranquility of coastal living!

Essential Information

Type	Status	MLS	Listing Type
Residential (For Sale)	Current	418458	Single Family Home

Key Details

Bed	Bath	Block & Parcel
3	2	32D,255
Acreage		
0.33		
Den	Year Built	Sq.Ft.
No	2022	2470.00

Additional Features

Lot Size	Views	Foundation	Furnished
0.33	Garden View	Slab	Partially
Garage	Zoning		
2	Agriculture/Residential		