



**EDGEWATER GROUP**  
REAL ESTATE & DEVELOPMENT

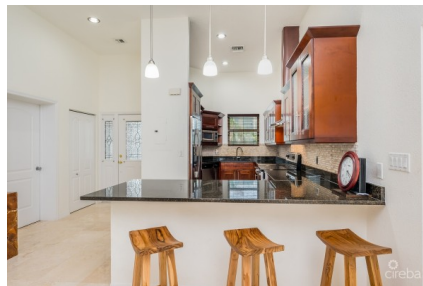
43 Vibert Bodden Drive, P.O. Box 30132 SMB George Town, Grand Cayman KY1-1201  
Cayman Islands, British West Indies.  
+1 (345) 946-3343  
info@edgewater.ky |

## **OLIVIA'S COVE #6 | GOVERNORS HARBOUR | CANAL FRONT CONDO**

Seven Mile Beach, Cayman Islands

MLS# 418248

**CI\$965,000**





**Debi Bergstrom**  
 dbergstrom@edgewater.ky

Enjoy GREAT LOCATION with this fabulous Seven Mile Beach corridor condo, centrally located, on the canal in Governors Harbour. Lovely water views! Located right across the street from the Public Seven Mile Beach, the INDIGO Hotel, the Seafire Residences, the Kimpton Hotel, restaurants and water activities – the complex’s immediate off site amenities are simply terrific. 1770 sqft second floor unit with nice size kitchen and specialty upgrades throughout. 12 ft high ceilings. Canal front with large dock for boat/water toys. Start enjoying all the amenities of the unit, the complex and the neighborhood has to offer (a simple walk under the bypass bridge to the beach or Yacht Club – easy access). Low strata fees and pet friendly to boot!

### Essential Information

|                                       |                          |                      |                                    |
|---------------------------------------|--------------------------|----------------------|------------------------------------|
| Type<br><b>Residential (For Sale)</b> | Status<br><b>Current</b> | MLS<br><b>418248</b> | Listing Type<br><b>Condominium</b> |
|---------------------------------------|--------------------------|----------------------|------------------------------------|

### Key Details

|                  |                           |                                    |
|------------------|---------------------------|------------------------------------|
| Bed<br><b>3</b>  | Bath<br><b>2</b>          | Block & Parcel<br><b>11C,314H6</b> |
| Den<br><b>No</b> | Year Built<br><b>2000</b> | Sq.Ft.<br><b>1770.00</b>           |

### Additional Features

|                         |   |                            |                           |
|-------------------------|---|----------------------------|---------------------------|
| Lot Size<br><b>0.00</b> | Views<br><b>Canal Front, Water View</b> | Sea Frontage<br><b>300</b> | Foundation<br><b>Slab</b> |
| Floor Level<br><b>2</b> | Furnished<br><b>Yes</b>                 |                            |                           |