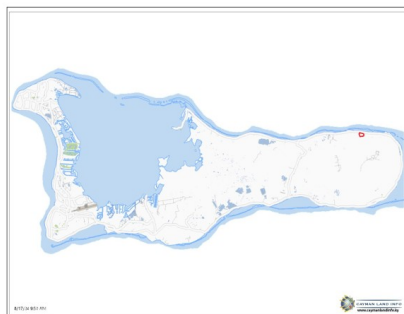
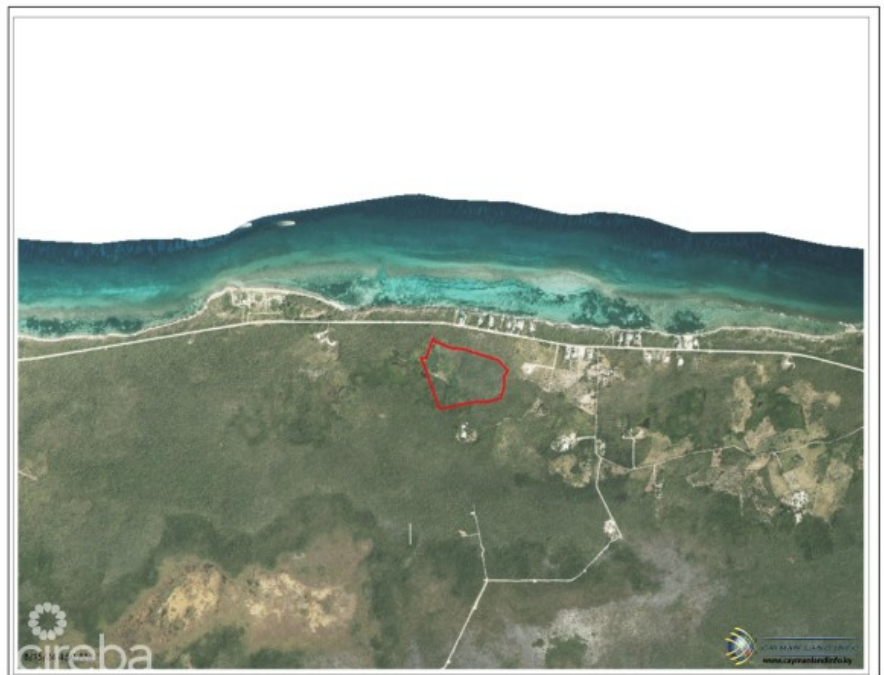


## GARLAND ESTATES - LOT 6

N.E. Coast, Cayman Islands

MLS# 418170

**CI\$159,862**





**Debi Bergstrom**  
dbergstrom@edgewater.ky

Welcome to Garland Estates Lot 6, a fantastic new subdivision located on the serene North East Coast of the Island, along Queens Highway. This location is one of the most pristine and tranquil parts of the Cayman Islands, offering the perfect backdrop for your investment property, a luxurious getaway home, or the chance to design and build your dream residence. A Hidden Gem on the East Coast Garland Estates is not just about location—it's about lifestyle. Situated near some of the island's most sought-after tourist attractions, such as the Crystal Caves and the Queen Elizabeth II Botanic Park, this area is a haven for nature lovers. Just a short drive away, you'll find Rum Point and Kaibo, offering quick and easy access to Stingray City, Starfish Point, and an array other water activity. Oversized Lots with Endless Possibilities The oversized lots at Garland Estates are truly a rare find. Whether you're looking to make a smart investment or seeking the ideal plot to build your dream home, these lots offer ample space and flexibility to accommodate your vision. For first-time buyers eager to jump on the property ladder, this is an unbeatable opportunity. A Sanctuary Close to Adventure Waking up every morning to the incredible sunrises and the tranquility of the North East Coast. Garland Estates provides the perfect balance of seclusion and accessibility. Whether you want to explore the island's natural wonders or simply relax in your own private sanctuary, this location delivers the best of both worlds. Secure Your Future at Garland Estates Lot 6 Don't miss out on the opportunity to own a piece of paradise. Garland Estates offers convenience, and potential. Perfectly suited for investors, new homeowners, or those looking to create a bespoke living experience, this subdivision is your gateway to an unparalleled island lifestyle. Contact us today to find out more about Garland Estates and how you can secure your own slice of paradise. How do you want to live your life? Photos courtesy of <https://www.caymanlandinfo.ky/>

Essential Information

Type	Status	MLS	Listing Type
Land (For Sale)	Pen/Con	418170	Agriculture

Key Details

Width	Depth	Bed	Bath	Block & Parcel
160.00	106.00	0	0	69A,2H6
Acreage				
0.51				
Den	Sq.Ft.			
No	0.00			

Additional Features

Views  
**Garden View**

Zoning  
**Agriculture/Residential**

Road Frontage  
**164**

Soil  
**Rock**