



EDGEWATER GROUP  
REAL ESTATE & DEVELOPMENT

43 Vibert Bodden Drive, P.O. Box 30132 SMB George Town, Grand Cayman KY1-1201  
Cayman Islands, British West Indies.  
+1 (345) 946-3343  
info@edgewater.ky |

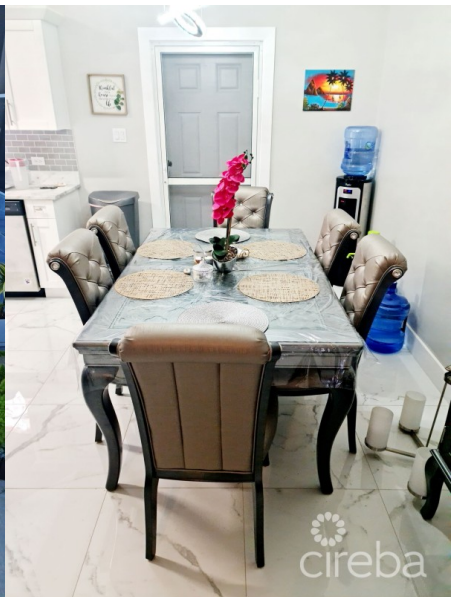
---

## MIDLAND EAST HOME

Midland East, Cayman Islands

MLS# 418039

**CI\$550,000**





**Debi Bergstrom**  
 dbergstrom@edgewater.ky

This charming 3-bedroom, 2-bathroom home is located in a desirable neighborhood close to the Clifton Hunter High School. As you enter the home, you are greeted by a bright and inviting living area. The kitchen is equipped with modern appliances and ample cabinet space. The unsuited master bedroom, complete with a walk-in closet is a private retreat which provides a peaceful sanctuary for rest and relaxation. The two additional bedrooms are generously sized and share a well-appointed bathroom. Convenience is key with a utility room, providing extra storage space and a dedicated area for laundry. The paved driveway offers parking for multiple vehicles, ensuring convenience for you and your guests. Situated on a large lot, there is plenty of outdoor space for gardening, play, or simply enjoying the fresh air. The proximity to Clifton Hunter High School makes this home an ideal choice for families with school-aged children. Don't miss the opportunity to make this wonderful property your new home. Contact us today to schedule a viewing and experience the charm and convenience this home has to offer.

## Essential Information

Type <b>Residential (For Sale)</b>	Status <b>Pen/Con</b>	MLS <b>418039</b>	Listing Type <b>Single Family Home</b>
---------------------------------------	--------------------------	----------------------	-------------------------------------------

## Key Details

Bed <b>3</b>	Bath <b>2</b>	Block & Parcel <b>59A,328</b>
-----------------	------------------	----------------------------------

Acreage  
**0.27**

Den <b>No</b>	Year Built <b>2021</b>	Sq.Ft. <b>1425.00</b>
------------------	---------------------------	--------------------------

## Additional Features

Lot Size <b>0.27</b>	Views <b>Garden View</b>	Foundation <b>Slab</b>	Furnished <b>Partially</b>
-------------------------	-----------------------------	---------------------------	-------------------------------

Zoning  
**Agriculture/Residential**