



EDGEWATER GROUP
REAL ESTATE & DEVELOPMENT

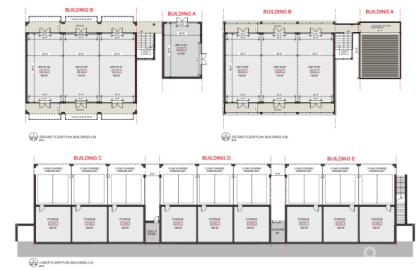
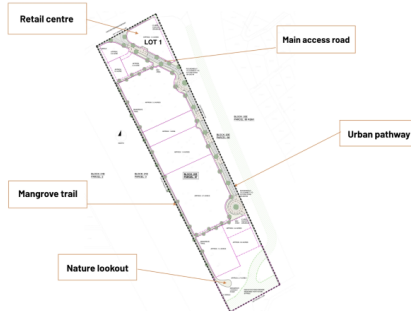
43 Vibert Bodden Drive, P.O. Box 30132 SMB George Town, Grand Cayman KY1-1201
Cayman Islands, British West Indies.
+1 (345) 946-3343
info@edgewater.ky |

THE SHOPS AT BUTTONWOOD - RETAIL

George Town East, Cayman Islands

MLS# 417989

US\$889,200





Debi Bergstrom
 dbergstrom@edgewater.ky

Imagine a small community in close proximity to George Town, the airport and Camana Bay. One where children have room to roam, mom can meet friends for coffee and kids can walk to school, participate with others in sports, tutor sessions, supervised playtime, and so much more. Buttonwood Park is envisioned to be all of the above and so much more. The new Island Primary School serves as the heart of the neighborhood, will educate up to 350 children in grades K-6. In 2025 the new private high school will have the capacity for 250 students in grades 7-11. All the makings for an idyllic neighborhood. The community will also feature a commercial centre, up to 42 residences, nature park, and sports fields. The Development team and Corcoran Cayman Islands has teamed with Evolving Island to develop the 28,000 SF commercial centre and in the future, phase a residential enclave of up to 42 homes. This development will be ideal for young families and professionals desirous of home ownership in Grand Cayman in a truly unique neighborhood where kids can actually walk to school, participate in tutoring classes and have access to a number of after-school programmes, all within a short distance of their home. We are placemakers, believing that every space we sell should accentuate the neighborhood and families who call this "home". Only a few select entrepreneurs will be able to seize this unique opportunity. Hopefully, our list of merchants and service providers will spark an interest in your plans for the future.

Essential Information

Type Commercial (For Sale)	Status Pen/Con	MLS 417989	Listing Type Retail
--------------------------------------	--------------------------	----------------------	-------------------------------

Key Details

Bed 0	Bath 0	Block & Parcel 20E,87H1D102
Acreage 1.24		
Den No	Year Built 2025	Sq.Ft. 984.00

Additional Features

Lot Size 1.24	Views Garden View	Foundation Slab	Zoning Commercial Neighbourhood
-------------------------	-----------------------------	---------------------------	---

Road Frontage
250