



EDGEWATER GROUP
REAL ESTATE & DEVELOPMENT

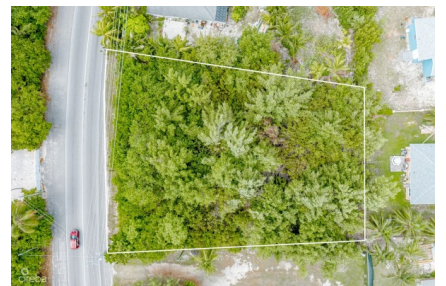
43 Vibert Bodden Drive, P.O. Box 30132 SMB George Town, Grand Cayman KY1-1201
Cayman Islands, British West Indies.
+1 (345) 946-3343
info@edgewater.ky |

PEASE BAY DEVELOPMENT LOT

Bodden Town, Cayman Islands

MLS# 417574

CI\$385,000





Debi Bergstrom
 dbergstrom@edgewater.ky

Welcome to Pease Bay Development Parcel A Prime Lot for Pioneers and Investors Situated in the vibrant area of Pease Bay, this 0.61-acre development parcel offers limitless potential for a discerning developer or investor. Imagine the possibilities: a small complex, multiple units, each property with its unique charm, or build your dream home! Exceptional Features at Your Fingertips Located just across the road from the pristine beach and the soon-to-be Pease Bay community beach and park, this parcel promises a lifestyle blend of leisure and convenience. With quick access to Rum Point, Kaibo, and other eastern attractions, it stands as a beacon for high-end tourism or residential luxury. Unmatched Accessibility Only a five-minute drive from the Savannah Countryside shopping center, the Pease Bay Development Parcel ensures that essentials are always within reach. This accessibility, combined with the tranquility of its setting, makes it an ideal spot for developing properties. Investment Potential That Speaks Volumes As the Cayman Islands continue to attract international attention, investment properties close to the beach, such as this development land, are increasingly sought after. Capitalize on this demand and see your investment flourish in a locale noted for its robust growth and high returns. Your Connection to Paradise We understand that purchasing real estate is not just about acquiring land; it's about embracing a lifestyle. The Pease Bay Development Parcel is not merely a piece of land; it's a gateway to creating a space where life's best moments can unfold. Make It Yours Discover how you can transform this fantastic parcel into a thriving community or a private haven. Let us guide you through the journey of turning this space into the embodiment of your dreams, where every corner holds the promise of a new chapter waiting to unfold. Please call for more information on owning this Pease Bay Development land. How do you want to live your life?

Essential Information

Type Land (For Sale)	Status Pen/Con	MLS 417574	Listing Type Low Density Residential
--------------------------------	--------------------------	----------------------	--

Key Details

Width 151.00	Depth 193.00	Bed 0	Bath 0	Block & Parcel 48E,57
Acreage 0.61				
Den No	Sq.Ft. 0.00			

Additional Features

Views
Garden View