



**EDGEWATER GROUP**  
REAL ESTATE & DEVELOPMENT

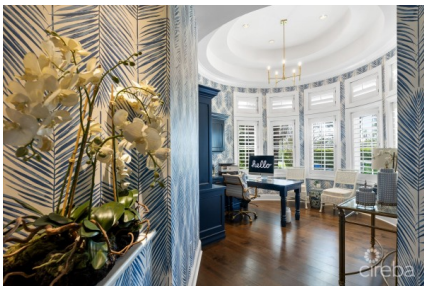
43 Vibert Bodden Drive, P.O. Box 30132 SMB George Town, Grand Cayman KY1-1201  
Cayman Islands, British West Indies.  
+1 (345) 946-3343  
info@edgewater.ky |

## THE ESTATE ON BANANA QUAY, CANAL POINT

Seven Mile Beach, Cayman Islands

MLS# 417302

**CI\$8,200,000**





**Debi Bergstrom**  
dbergstrom@edgewater.ky

Discover a lush retreat behind the gates of Cayman’s premier neighborhood. The Estate on Banana Quay in Canal Point is an exquisite custom residence situated on more than an acre of canal frontage in one of Cayman’s most exclusive communities. Indulge in amenities galore that cater to those who love to entertain, culinary connoisseurs and boating enthusiasts, all while enjoying the warmly designed, tastefully curated features of this home. Set on a sprawling 1.127-acre estate, this Mediterranean-estate inspired residence boasts one of the largest parcels in all of Canal Point –a feat nearly impossible to replicate. Step inside and observe the grandeur of the formal, welcoming living room and dining room with 24-foot-high custom tray ceilings, inviting an abundance of natural light. Steps away the cozy family room and breakfast nook are set adjacent to the large custom kitchen with high-end appliances, bar height eat-in counters and unique features sure to be enjoyed by those who spend time in the kitchen. From here, the impressive outdoor entertainment spaces are displayed including the pool and spa, large terrace, covered outdoor kitchen and lounging spaces. The master wing features unobstructed views of the lush landscape, pool terrace and canal with french doors that lead directly out to the alfresco terrace. In this suite, the high ceilings, lighting, furnishings and décor are akin to a spa experience. The master wing features his and her custom closets, a spacious bathroom with jacuzzi, walk-in shower, his and her sinks, vanity and water closet. Each of the large guest bedrooms feature high ceilings, spacious ensuite bathrooms, custom closets and balconies. Generous natural light is enhanced with beautiful window treatments in each room, adding privacy and style to each space. Beautiful furnishings from the like of Anna Hislop Home adorn each room. The home office is kitted with huge windows, and is large enough for a full desk + storage and seating area. Working from home has never been so stylish. Upstairs, just off the added lounge space – ideal for movie night or for entertainment – is another designated study or work-from-home space. Discover refined details throughout The Estate on Banana Quay. A double car garage, mud room, under-stairs storage and oversized kitchen pantry are just a few of the nooks in this residence with additional storage. More unique features include a backup generator, hard wired throughout the home to keep it aglow during power outages, a large cistern for water efficiency, outdoor kitchen and pool side bathroom, plus mature fruit trees throughout the landscape of the estate. The Estate on Banana Quay is a statement of luxury waiting to be discovered.

## Essential Information

Type	Status	MLS	Listing Type
<b>Residential (For Sale)</b>	<b>Current</b>	<b>417302</b>	<b>Single Family Home</b>

## Key Details

Bed <b>5</b>	Bath <b>6.5</b>	Block & Parcel <b>12C,441</b>
Acreage <b>1.13</b>		
Den <b>No</b>	Year Built <b>2009</b>	Sq.Ft. <b>7045.00</b>

## Additional Features

Lot Size <b>1.13</b>	Views <b>Canal Front</b>	Sea Frontage <b>137</b>	Foundation <b>Slab</b>
Furnished <b>Yes</b>	Garage <b>Yes</b>	Zoning <b>Low Density residential</b>	