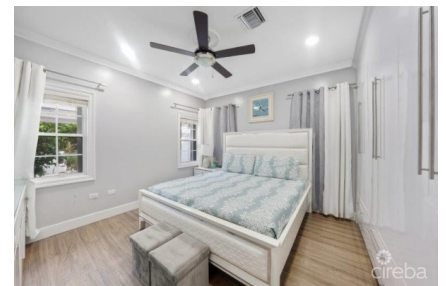
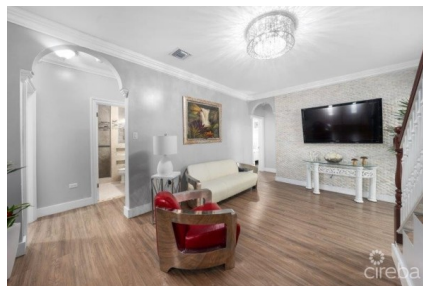
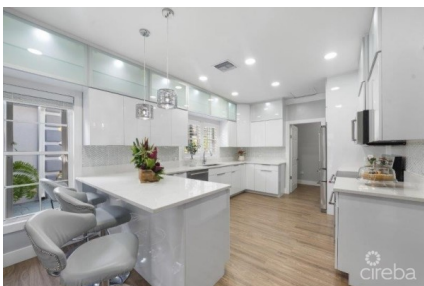


FAMILY HOME W/ HUGE OUTDOOR KITCHEN IN SAVANNAH

Savannah, Cayman Islands

MLS# 417283

CI\$799,000





Debi Bergstrom
 dbergstrom@edgewater.ky

Indoor/outdoor easy living in North Sound Estates with minimum yard maintenance requirements and loads of parking! This unique 5-bedroom home will delight the family buyer who loves entertaining! You have to see this enormous covered outdoor kitchen and Lanai-style entertaining area! A 30-foot countertop is appointed with a stainless steel 4 plate BBQ grill, large griddle, Kamada Joe 'Egg-shaped' smoker, 2-burner grill, multiple propane tank storage cupboards, and stainless steel cupboards and drawers for enjoying large informal gatherings. This gem of a family home has been extremely well-built with outside living and entertaining in the gentle Caribbean climate being of paramount importance. Inside you will find a gorgeous modern large kitchen showcasing gloss white cabinets by 'Woods Furniture' and high-end stainless steel Kitchen Aid appliances, a breakfast nook, and high ceilings! In addition, outside near the huge carport, there is a large 10x11 tool shed with shelving and 6 metal tool storage cabinets. Near the outdoor patio is another 12x15 annex housing the laundry facility with a powder room. From an investor's point of view, this home layout might work well as staff quarters that could sleep 5 couples and the outdoor living space would provide loads of private space and there is easily room for 10 cars in the various driveways. Accordion hurricane shutters throughout, two-zone Trane 16 seer a/c units, standing seam roof, two above-ground water tanks 900 gallons, two large carports, and generous parking for family and friends complete the package! Must be seen to be appreciated!

Essential Information

Type	Status	MLS	Listing Type
Residential (For Sale)	Current	417283	Single Family Home

Key Details

Bed	Bath	Block & Parcel
5	3	27D,55

Acreage
0.23

Den	Year Built	Sq.Ft.
No	2000	1661.00

Additional Features

Lot Size	Views	Foundation	Furnished
0.23	Garden View	Slab	Partially

Zoning
**Low Density
residential**