



**EDGEWATER GROUP**  
REAL ESTATE & DEVELOPMENT

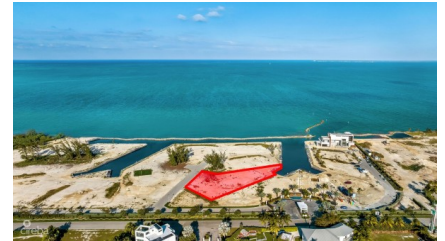
43 Vibert Bodden Drive, P.O. Box 30132 SMB George Town, Grand Cayman KY1-1201  
Cayman Islands, British West Indies.  
+1 (345) 946-3343  
info@edgewater.ky |

## DIAMOND'S EDGE WATERFRONT ESTATE LOT 10

Seven Mile Beach, Cayman Islands

MLS# 415590

**US\$2,195,000**





**Debi Bergstrom**  
 dbergstrom@edgewater.ky

Build your dream home in one of the last remaining oceanfront lots in Cayman. Located on the North Sound, with unparalleled views and direct boating access this .6754 acre lot enjoys year round breezes and obstructed views of the North Sound. With high-end cantilevered docks built-in for every homeowner along with a native stone seawall surrounding the oceanfront canals you are ensured long term reinforcement and stability and your piece of paradise will have the seamless feel that makes this enclave unique. From 24-hour manned CCTV security entrance gates to customized streetlights and curbing along with special design details in the common areas - manicured spaces, extensive landscaping, on site maintenance, private refuse collection and underground utilities - they all work in harmony to ensure that Diamond's Edge is finished to the highest standards. Presenting a unique oceanfront enclave at Cayman's Most Distinctive Address. Diamond's Edge... A Rare Offering for the Discerning Few!

## Essential Information

|                                |                          |                      |  |
|--------------------------------|--------------------------|----------------------|--|
| Type<br><b>Land (For Sale)</b> | Status<br><b>Current</b> | MLS<br><b>415590</b> | Listing Type<br><b>Beach/Hotel/Tourism</b> |
|--------------------------------|--------------------------|----------------------|--|

## Key Details

|                        |                        |                 |                  |                                  |
|------------------------|------------------------|-----------------|------------------|----------------------------------|
| Width<br><b>200.00</b> | Depth<br><b>240.00</b> | Bed<br><b>0</b> | Bath<br><b>0</b> | Block & Parcel<br><b>17A,358</b> |
| Acreage<br><b>0.65</b> |                        |                 |                  |                                  |
| Den<br><b>No</b>       | Sq.Ft.<br><b>0.00</b>  |                 |                  |                                  |

## Additional Features

|  |                                |                            |                             |
|--|--------------------------------|----------------------------|-----------------------------|
| Views<br><b>Canal Front, Water Front</b> | Zoning<br><b>Hotel/Tourism</b> | Sea Frontage<br><b>100</b> | Road Frontage<br><b>211</b> |
| Soil<br><b>Marl</b>                      |                                |                            |                             |