



EDGEWATER GROUP
REAL ESTATE & DEVELOPMENT

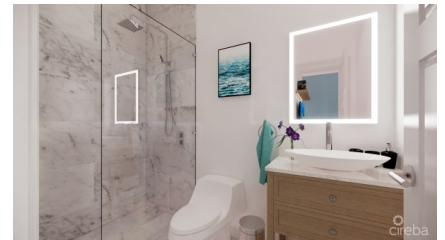
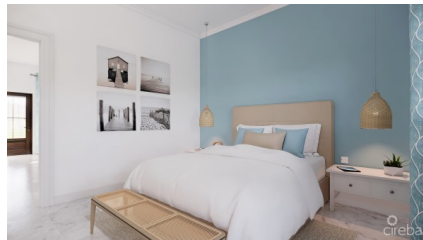
43 Vibert Bodden Drive, P.O. Box 30132 SMB George Town, Grand Cayman KY1-1201
Cayman Islands, British West Indies.
+1 (345) 946-3343
info@edgewater.ky |

WEST BAY 1 - NEW 1 BED END UNIT

West Bay North West, Cayman Islands

MLS# 417025

CI\$435,000





Debi Bergstrom
 dbergstrom@edgewater.ky

Welcome to this stunning 1-bedroom, 1-bathroom condo located off North West Point Road in the highly sought-after community of West Bay. This new development offers an incredible opportunity for both homeowners and investors alike! Situated just a short distance from the beach, this property provides the perfect setting for those seeking a tranquil and peaceful lifestyle. The surrounding area boasts a range of amenities including grocery, banking, food and beverage options, health and beauty, and pharmacy, ensuring convenience is always within reach. With its solid construction and preconstruction pricing, this ground floor unit presents an excellent investment opportunity. The condo features stainless steel appliances, offering both functionality and style. The spacious layout encompasses 782 square feet, providing ample room for comfortable living. Residents of this community will have access to a pool and cabanas, perfect for relaxing and enjoying the warm Caribbean sunshine. The location also offers easy access to George Town, ensuring that commuting to work or exploring the island's vibrant capital is a breeze. Whether you are looking to make this your new home or capitalize on the lucrative rental market in West Bay, this property offers endless potential. Don't miss out on the chance to own a piece of paradise at an affordable price. Call today to schedule a viewing and secure your spot in this exciting new development on North West Point Road.

Essential Information

Type	Status	MLS	Listing Type
Residential (For Sale)	Current	417025	Condominium

Key Details

Bed	Bath	Block & Parcel
1	1	1D,136UNITF6A
Den	Year Built	Sq.Ft.
No	2025	782.00

Additional Features

Lot Size	Views	Foundation	Floor Level
0.00	Garden View, Pool View	Slab	1