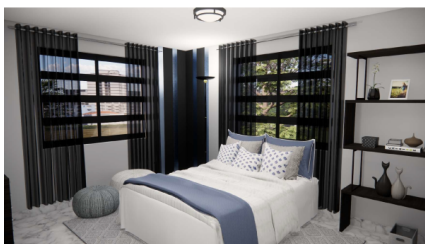
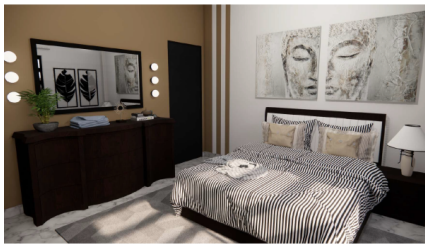


## **NOBLE PARK TOWNHOME #1 - WEST BAY**

West Bay North West, Cayman Islands

MLS# 417017

**CI\$475,000**





**Debi Bergstrom**  
 dbergstrom@edgewater.ky

Step into the charm of this beautiful 2-bedroom, 2.5-bathroom townhome nestled in the sought-after community of West Bay. This home presents an unbeatable location directly across from Noble Recreational Park, setting the stage for a lifestyle filled with leisure and convenience. Inside, discover a well-designed layout that offers an excellent blend of shared and private spaces. The spacious living room features an open concept that fosters a seamless flow into the dining area and kitchen, perfect for casual meals or entertaining guests. The kitchen itself is a cook's dream, with ample counter space and storage, allowing for easy meal preparation and organization. The well-sized bedrooms each come with their own dedicated bathrooms, providing the perfect sanctuary for rest and relaxation. An additional half-bath ensures convenience for both residents and guests. With easy commuting options to George Town and close proximity to beautiful beaches, you'll find work-life balance effortlessly. Plus, living in West Bay offers a plethora of fun amenities. From the Turtle Center and restaurants to recreational centers and outdoor parks, there's always something to enjoy. This townhome's prime location ensures you're never far from the action, yet distant enough to enjoy peace and quiet. Don't miss out on this opportunity to own a slice of the West Bay lifestyle. Whether you're a first-time homebuyer, a professional looking for an easy commute, or someone searching for a serene place to retire, this spacious and well-built townhome offers a matchless mix of comfort, convenience, and community. Make it your own.

## Essential Information

Type	Status	MLS	Listing Type
<b>Residential (For Sale)</b>	<b>Current</b>	<b>417017</b>	<b>Condominium</b>

## Key Details

Bed	Bath	Block & Parcel
<b>2</b>	<b>2.5</b>	<b>4B,525H1</b>
Den	Year Built	Sq.Ft.
<b>No</b>	<b>2023</b>	<b>1350.00</b>

## Additional Features

Lot Size	Views	Foundation	Floor Level
<b>0.00</b>	<b>Garden View</b>	<b>Slab</b>	<b>1</b>