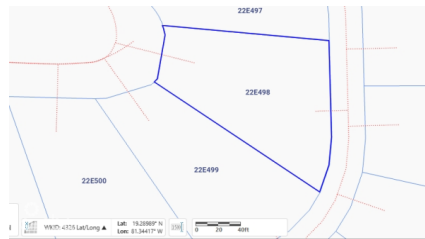
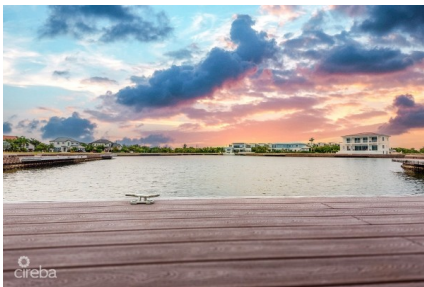


HARBOUR REACH LAND PARCEL

Prospect / Newlands, Cayman Islands

MLS# 416715

CI\$750,000





Debi Bergstrom
 dbergstrom@edgewater.ky

Imagine beautiful sunset views from this idyllic west facing lot in the gated community of Harbour Reach in Grand Harbour. Includes plans for a stunning 5,750sq ft house designed by renowned architects Trio Architecture. Planning permission approved & strata approved. Construction drawings complete, along with solar, pool & landscape design & interior design concept. The unique shape at the widest part of the canal together with the location of the lot provides impressive street frontage and a beautiful view over the lagoon portion of the Harbour Reach canal - the widest part of the canal & greatest distance from opposite side neighbours. The rear of the property faces west for afternoon sun in the pool and beautiful sunset views across the water. Boat dock included for direct access onto the north sound. Total lot size 14,648 sq ft / 0.34 acres.

Essential Information

Type Land (For Sale)	Status Current	MLS 416715	Listing Type Low Density Residential
--------------------------------	--------------------------	----------------------	--

Key Details

Width 85.70	Depth 148.00	Bed 0	Bath 0	Block & Parcel 22E,498
Acreage 0.34				
Den No	Sq.Ft. 0.00			

Additional Features

Views Canal Front, Canal View	Zoning Low Density residential	Sea Frontage 75	Road Frontage 136
Soil Other			