



EDGEWATER GROUP
REAL ESTATE & DEVELOPMENT

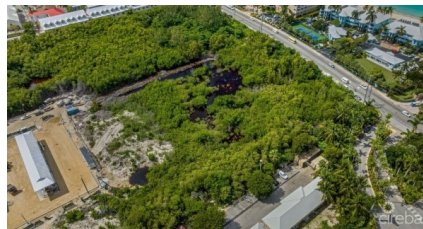
43 Vibert Bodden Drive, P.O. Box 30132 SMB George Town, Grand Cayman KY1-1201
Cayman Islands, British West Indies.
+1 (345) 946-3343
info@edgewater.ky |

HOTEL/TOURISM DEVELOPMENT LAND SEVEN MILE BEACH CORRIDOR

Seven Mile Beach, Cayman Islands

MLS# 416663

CI\$16,500,000





Debi Bergstrom
 dbergstrom@edgewater.ky

Discover an extraordinary opportunity in the heart of the Cayman Islands with this Exclusive Hotel/Tourism Development Land. Situated on the prestigious Seven Mile Beach Corridor, this prime property enjoys an enviable location adjacent to the world-renowned Ritz Carlton Hotel & Residences. Imagine owning land just steps away from the world-famous Seven Mile Beach, offering unrivaled beach proximity and a prestigious neighbor. With 350 feet of frontage on the West Bay Road and an additional 100 feet of road access on the bypass, this property ensures seamless accessibility for both guests and staff. Zoned Hotel Tourism, it allows for the creation of a 10-story masterpiece with 65 luxurious bedrooms, maximizing your investment potential. Not only is this property a logistical gem, but it also immerses your future guests in a vibrant and convenient environment. They'll have the pleasure of strolling to the finest restaurants and nightlife that the Cayman Islands have to offer. Additionally, the property's proximity to Caymana Bay, a bustling city center featuring cinemas, bookstores, gyms, boutiques, fine dining establishments, and wine bars, ensures entertainment and amenities are within easy reach. This development land is the last remaining piece on the Seven Mile Beach Corridor, making it an exclusive and sought-after opportunity in the region. Embrace this rare chance to create a remarkable destination that embodies an ethos - bold, ambitious, and authentically enriching the lives of those who live there. Your vision awaits realization in this vibrant and lucrative setting.

Essential Information

Type	Status	MLS	Listing Type
Land (For Sale)	Current	416663	Beach/Hotel/Tourism

Key Details

Width	Depth	Bed	Bath	Block & Parcel
350.00	435.00	0	0	12C,517 (SD)
Acreage				
3.00				
Den	Sq.Ft.			
No	0.00			

Additional Features

Views
Inland