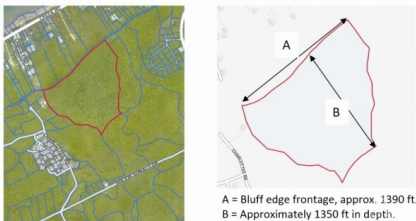


## BRAC BLUFF/1300 FT BLUFF EDGE

Cayman Brac East, Cayman Islands

MLS# 416556

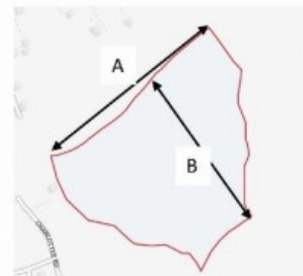
**CI\$700,000**



A = Bluff edge frontage, approx. 1390 ft.  
B = Approximately 1350 ft in depth.



## CAYMAN BRAC BLUFF EDGE 29 ACRES



A = Bluff edge frontage, approx. 1390 ft.  
B = Approximately 1350 ft in depth.

**ASKING CI\$700,000**

*Location: Cayman Brac, a pristine Caribbean island*

*Property Size: Expansive 29-acre parcel*

*Bluff Edge Frontage: Over 1,300 feet along the stunning Bluff edge*

*Views: Breathtaking and uninterrupted sea views*

*Access: 30-foot registered undeveloped vehicular right-of-way*

*Potential: Ideal for a private sanctuary, luxurious retreat, major subdivision, or large-scale resort development*

*Prime Location: Situated on Cayman Brac's sought-after high Bluff edge*

*Investment Opportunity: Secure a profitable return on a subdivision development or grand resort, or shape your vision for a secluded oasis*

*Opportunities of this scale and value are exceedingly rare. Do not miss out on this unique real estate offering – call for more information today!*



**Debi Bergstrom**  
dbergstrom@edgewater.ky

This exceptional real estate offering comprises an amazing corner of paradise on the pristine island of Cayman Brac. Nestled on the Bluff edge, this expansive 29-acre property boasts over 1,300 feet of stunning Bluff edge frontage and presents uninterrupted sea views that will take your breath away. The property has benefit of a 30-foot registered undeveloped vehicular right-of-way. The possibilities are many: whether you envision creating a private sanctuary, a luxurious retreat, developing a major subdivision, or embarking on a large-scale resort development project. This property is located in one of Cayman Brac's most sought-after situations: the high Bluff edge. Don't miss the chance to own a slice of this island paradise. Seize the opportunity to shape your vision or secure a very profitable investment return, be it a secluded oasis or a grand resort venture. Opportunities of this scale and value are supremely rare. Act fast, as properties like this rarely grace the market. Call now for more information.

## Essential Information

Type	Status	MLS	Listing Type
<b>Land (For Sale)</b>	<b>Current</b>	<b>416556</b>	<b>Little Cayman/Cayman Brac</b>

## Key Details

Width	Depth	Bed	Bath	Block & Parcel
<b>1300.00</b>	<b>1350.00</b>	<b>0</b>	<b>0</b>	<b>106A,37</b>
Acreage				
<b>29.00</b>				
Den	Sq.Ft.			
<b>No</b>	<b>0.00</b>			

## Additional Features

Views  
**Water View**