



EDGEWATER GROUP
REAL ESTATE & DEVELOPMENT

43 Vibert Bodden Drive, P.O. Box 30132 SMB George Town, Grand Cayman KY1-1201
Cayman Islands, British West Indies.
+1 (345) 946-3343
info@edgewater.ky |

ONE|GT RESIDENCES - UNIT 722

George Town Central, Cayman Islands

MLS# 414253

CI\$1,579,000



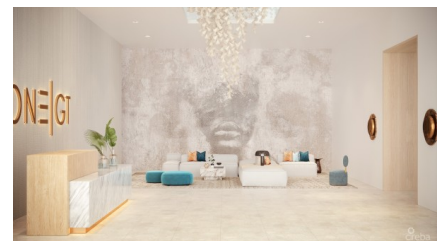
ONE|GT



UNIT TYPE 0.7

BEDROOMS 2
BATHROOMS 2
INTERNAL SQ FT 1,164
EXTERNAL SQ FT 469
TOTAL SQ FT 1,633

CREBA





Debi Bergstrom
 dbergstrom@edgewater.ky

Cayman’s next landmark development project, known as ONE|GT, fuses the very best of contemporary urban living from around the world - from the vibrant rooftop beach clubs of Miami and LA, to the local piazzas and street cafés of Europe, and of course exquisite Caribbean artistic flair. Comprising a 178-suite boutique hotel and luxury residences, with amazing on-site amenities, ONE|GT is located at the edge of central George Town, on Goring Avenue, directly behind Bayshore Mall. With amazing on-site amenities, ONE|GT will be the capital’s first ten-storey structure, rising to 144’ above ground level and offering spectacular multi-aspect views. Its eleventh floor “Sky Club” with its unique infinity edge pool, private cabanas, bar & grille, yoga, treatment, and event areas, will bring a new level of sophisticated enjoyment to our islands, whilst its “signature” restaurant, grand café, and many other amenities will ensure owners, tenants and guests can enjoy ONE|GT to the fullest. There will also be a private residents’ pool, full gym, and separate residents’ entrance, along with onsite covered and valet parking and owner storage units available. Owners will also enjoy very solid returns on investment from ONE|GT's rental programs or can choose to rent their units on the open market. Estimated completion date is early 2025. Enjoy truly “elevated modern island living” at ONE|GT and invest now before prices elevate too! Unit Type D.1 This exquisite corner residence boasts two en-suite bedroom suites, one a master suite with a dual walk-in closets and direct access to the expansive wrap-around terrace. The unit has a full kitchen, with center aisle and a large living/dining area, providing great indoor/outside living opportunities. Enjoy truly “elevated modern island living” at ONE|GT and invest now before prices elevate too!

Essential Information

Type Residential (For Sale)	Status Increased	MLS 414253	Listing Type Condominium
---------------------------------------	----------------------------	----------------------	------------------------------------

Key Details

Bed 2	Bath 2	Block & Parcel 14BH,167UNIT722
Den No	Year Built 2022	Sq.Ft. 1565.00

Additional Features

Lot Size 0.00	Views Water View, Inland	Foundation Slab	Floor Level 7
-------------------------	------------------------------------	---------------------------	-------------------------